

The State of Global Civic Engagement

Deep Dive On

SEXUAL ORIENTATION & GENDER IDENTITY RIGHTS

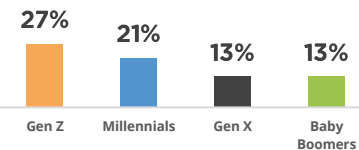
DEMOGRAPHIC BREAK DOWN



18%

Of people are concerned about sexual orientation & gender identity rights when compared to other issues

GENERATIONAL BREAKDOWN OF INTEREST IN ISSUE AREA



17%



Of **MEN** said sexual orientation & gender identity rights are one of their top areas of concern

20%

Of **WOMEN** said sexual orientation & gender identity rights are one of their top areas of concern

*those identifying as non-binary or other <0%

WHY PEOPLE ARE TAKING ACTION



I saw something on social media that informed me (32%)

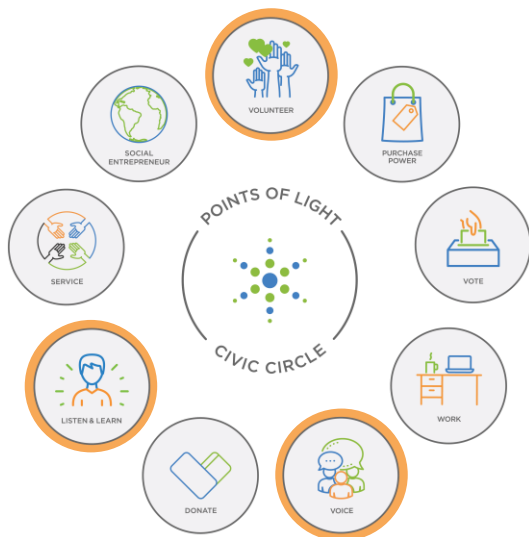


I believe the actions of one person can go a long way in making a difference (32%)



My actions have inspired many other people to act (26%)

HOW PEOPLE ARE TAKING ACTION



[Points of Light's Civic Circle](#)® represents a person's power to lead, lend support and take action for causes they care about, and to lead a civic life. People can engage through one or several elements of the Civic Circle®.

TOP ACTIONS TAKEN

Took time to learn about the cause or social issue (LISTEN & LEARN) **77%**

Posted or shared content on social media platform (VOICE) **75%**

Intentionally helped someone else (VOLUNTEER) **71%**

MOST INFLUENTIAL ACTIONS

Posted or shared content on social media platform (VOICE) **82%**

Volunteered with a cause or organization – in-person or online (VOLUNTEER) **81%**

Participated in marches or rallies (VOICE) **79%**

DATA TO INSIGHTS

In the U.S., we are only 7 years post-legalization of marriage equality through *Obergefell v. Hodges*. Though activists have been paving the way for LGBTQ equality for decades, integration in mainstream society has only happened recently.

As a result, concern for this issue area skews toward younger generations who have largely grown up with an expectation for equality and display a greater comfort in navigating issues of sexual orientation & gender identity rights.

IN THE NEXT 30 DAYS, PEOPLE ARE MOST LIKELY TO:



68%



63%



61%